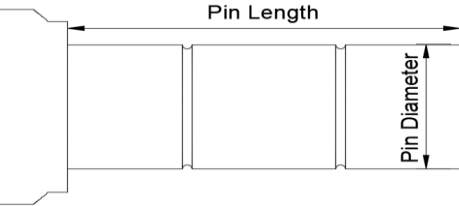
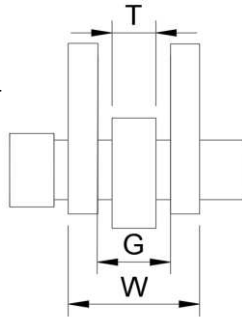


# Load pin specification

Breaking Load		t
Max working load		t
Pin diameter (D)		mm
Pin length (L)		mm
Load span (T)		mm
Toggle gap (G)		mm
Support span (W)		mm
Number of pins		

Required for quotation



### Material

Standard	Stainless 17-4PH	
Custom	Titanium	
	Nitronic	

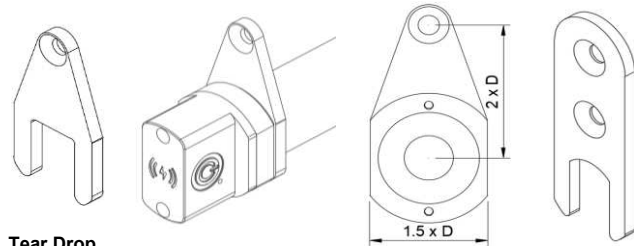
**Anti rotation device** Single at head end, or double, one each end of pin

		Single	Double
Anti rotation	Locking fork		
	Tear drop		
	Keep plate		
Standard fasteners	Single M8		
	Double M8		

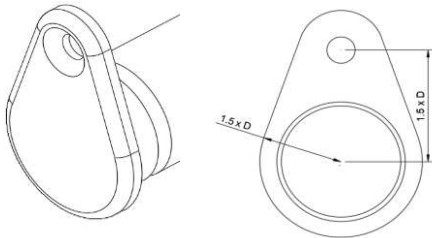
Load direction will be inline with anti rotation device

Standard anti rotation dimensions shown below. Specify if different

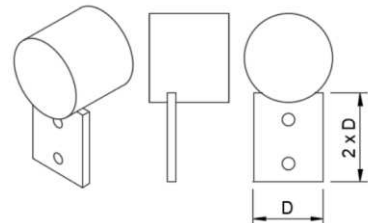
**Locking Fork** (single or double fastener)



**Tear Drop**



**Keep Plate**



Extra Information	
Is barreling required?	
Please note that barreling will reduce the working load by approx 15%	

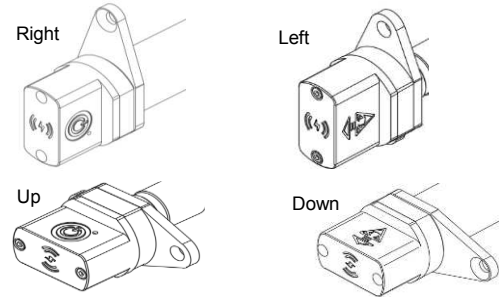
### Output options

Electronics brand	B&G/Sailmon	
	Garmin	
	NKE	
	Raymarine	
	Other	Please Specify

**Wireless pin**

Gateway required	Yes	
	No	

Button Direction	Right	
	Left	
	Up	
	Down	



**Wired pin**

Connector type	M12	Standard
	Other - custom	Please specify

Output type	Digital	NMEA 2000	Standard
		RS485	
		Custom	
	Analogue	0-5V	
		4-20mA	
		mV/V	

Output Wire Direction	Inline		
	Right Angle (direction in relation to load, images below)	Left	
		Right	
		Up	
		Down	

